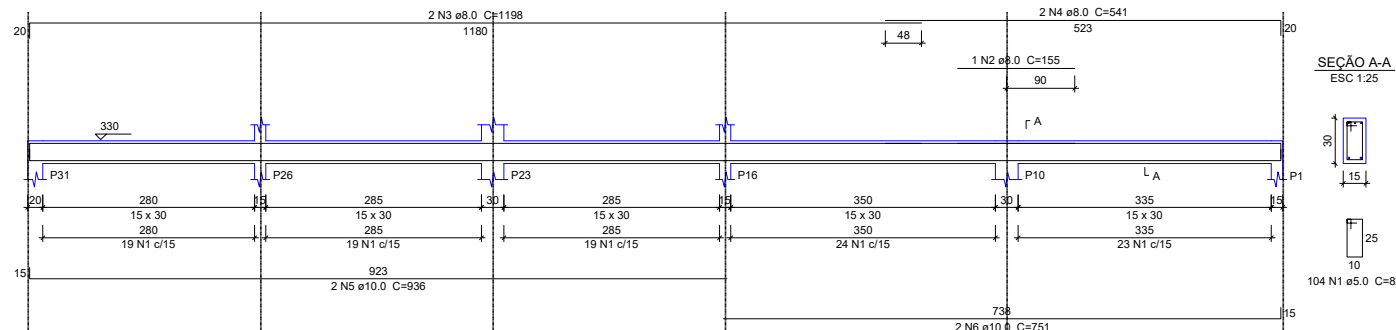
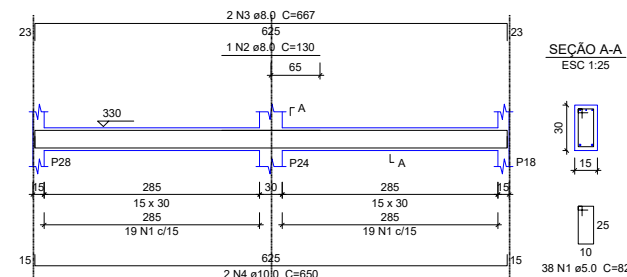


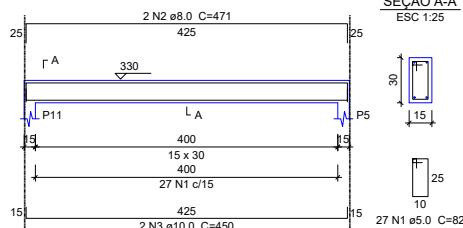
VC8
ESC 1:50



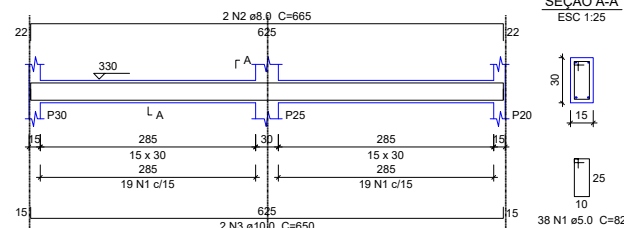
VC9
ESC 1:50



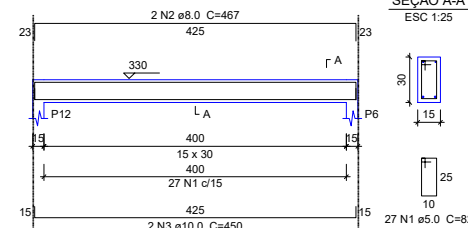
VC10
ESC 1:50



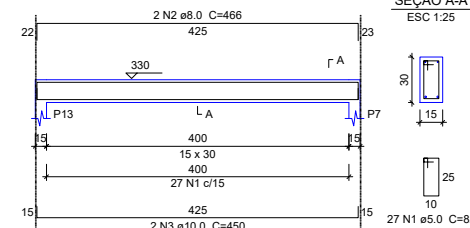
VC11
ESC 1:50



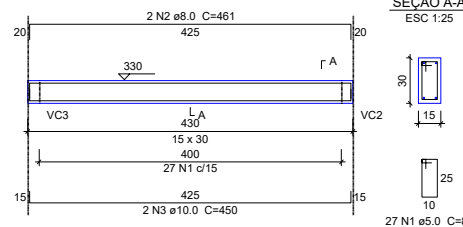
VC12
ESC 1:50



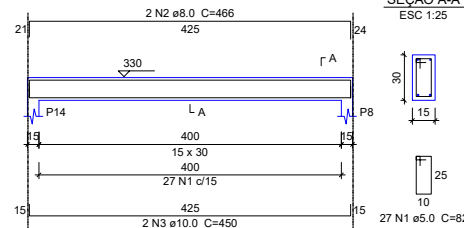
VC13
ESC 1:50



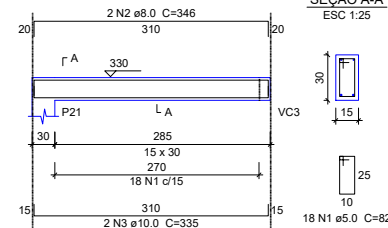
VC14
ESC 1:50



VC15
ESC 1:50



VC16
ESC 1:50



Relação do aço

| ELEMENTO | AÇO | N | DIAM | Q | UNIT (cm) | C.TOTAL (cm) |
|----------|------|---|------|-----|-----------|--------------|
| VC1 | CA60 | 1 | 5.0 | 96 | 82 | 7872 |
| | CA50 | 2 | 8.0 | 2 | 1198 | 2396 |
| | CA50 | 3 | 8.0 | 2 | 462 | 924 |
| | CA50 | 4 | 10.0 | 2 | 1163 | 2326 |
| | CA50 | 5 | 10.0 | 2 | 418 | 836 |
| VC2 | CA60 | 1 | 5.0 | 90 | 82 | 7380 |
| | CA50 | 2 | 8.0 | 1 | 600 | 600 |
| | CA50 | 3 | 8.0 | 2 | 1198 | 2396 |
| | CA50 | 4 | 8.0 | 2 | 369 | 738 |
| | CA50 | 5 | 10.0 | 2 | 1123 | 2246 |
| VC3 | CA50 | 6 | 10.0 | 2 | 353 | 706 |
| | CA60 | 1 | 5.0 | 90 | 82 | 7380 |
| | CA50 | 2 | 8.0 | 1 | 605 | 605 |
| | CA50 | 3 | 8.0 | 2 | 1198 | 2396 |
| | CA50 | 4 | 8.0 | 2 | 362 | 724 |
| VC4 | CA50 | 5 | 10.0 | 2 | 1123 | 2246 |
| | CA50 | 6 | 10.0 | 2 | 353 | 706 |
| | CA60 | 1 | 5.0 | 14 | 82 | 1148 |
| | CA50 | 2 | 8.0 | 2 | 261 | 522 |
| | CA50 | 3 | 10.0 | 2 | 250 | 500 |
| VC5 | CA60 | 1 | 5.0 | 100 | 82 | 8200 |
| | CA50 | 2 | 8.0 | 2 | 140 | 280 |
| | CA50 | 3 | 8.0 | 2 | 1198 | 2396 |
| | CA50 | 4 | 8.0 | 2 | 528 | 1056 |
| | CA50 | 5 | 10.0 | 4 | 828 | 3312 |
| VC6 | CA60 | 1 | 5.0 | 100 | 82 | 8200 |
| | CA50 | 2 | 8.0 | 1 | 140 | 140 |
| | CA50 | 3 | 8.0 | 2 | 1198 | 2396 |
| | CA50 | 4 | 8.0 | 2 | 529 | 1058 |
| | CA50 | 5 | 10.0 | 4 | 828 | 3312 |
| VC7 | CA60 | 1 | 5.0 | 168 | 82 | 13776 |
| | CA50 | 2 | 8.0 | 2 | 1198 | 2396 |
| | CA50 | 3 | 8.0 | 2 | 1200 | 2400 |
| | CA50 | 4 | 8.0 | 2 | 398 | 796 |
| | CA50 | 5 | 10.0 | 2 | 1016 | 2032 |
| VC8 | CA50 | 6 | 10.0 | 2 | 996 | 1992 |
| | CA50 | 7 | 10.0 | 2 | 684 | 1368 |
| | CA60 | 1 | 5.0 | 104 | 82 | 8528 |
| | CA50 | 2 | 8.0 | 1 | 155 | 155 |
| | CA50 | 3 | 8.0 | 2 | 1198 | 2396 |
| VC9 | CA50 | 4 | 8.0 | 2 | 541 | 1082 |
| | CA50 | 5 | 10.0 | 2 | 936 | 1872 |
| | CA50 | 6 | 10.0 | 2 | 751 | 1502 |
| | CA60 | 1 | 5.0 | 38 | 82 | 3116 |
| | CA50 | 2 | 8.0 | 1 | 130 | 130 |
| VC10 | CA50 | 3 | 8.0 | 2 | 667 | 1334 |
| | CA50 | 4 | 10.0 | 2 | 650 | 1300 |
| | CA60 | 1 | 5.0 | 27 | 82 | 2214 |
| | CA50 | 2 | 8.0 | 2 | 471 | 942 |
| | CA50 | 3 | 10.0 | 2 | 450 | 900 |
| VC11 | CA60 | 1 | 5.0 | 38 | 82 | 3116 |
| | CA50 | 2 | 8.0 | 2 | 665 | 1330 |
| | CA50 | 3 | 10.0 | 2 | 650 | 1300 |
| | CA60 | 1 | 5.0 | 27 | 82 | 2214 |
| | CA50 | 2 | 8.0 | 2 | 467 | 934 |
| VC12 | CA50 | 3 | 10.0 | 2 | 450 | 900 |
| | CA60 | 1 | 5.0 | 27 | 82 | 2214 |
| | CA50 | 2 | 8.0 | 2 | 466 | 932 |
| | CA50 | 3 | 10.0 | 2 | 450 | 900 |
| | CA60 | 1 | 5.0 | 27 | 82 | 2214 |
| VC13 | CA50 | 2 | 8.0 | 2 | 461 | 922 |
| | CA50 | 3 | 10.0 | 2 | 450 | 900 |
| | CA60 | 1 | 5.0 | 27 | 82 | 2214 |
| | CA50 | 2 | 8.0 | 2 | 466 | 932 |
| | CA50 | 3 | 10.0 | 2 | 450 | 900 |
| VC14 | CA60 | 1 | 5.0 | 18 | 82 | 1476 |
| | CA50 | 2 | 8.0 | 2 | 346 | 692 |
| | CA50 | 3 | 10.0 | 2 | 335 | 670 |
| | CA50 | 2 | 8.0 | 2 | 346 | 692 |
| | CA50 | 3 | 10.0 | 2 | 335 | 670 |

Resumo do aço

| AÇO | DIAM | C.TOTAL (m) | PESO (kg) |
|------------|-------|-------------|-----------|
| CA50 | 8.0 | 360 | 142.1 |
| CA50 | 10.0 | 327.3 | 201.8 |
| CA60 | 5.0 | 812.7 | 125.3 |
| PESO TOTAL | | | |
| CA50 | 343.8 | | |
| CA60 | 125.3 | | |

Vol. de concreto total (C-25) = 7.24 m³
Área de forma total = 120.6 m²

01 VIGA COBERTURA

ESC: 1/200



PREFEITURA MUNICIPAL DE
VÁRZEA GRANDE
Mais por Você. Mais por Várzea Grande.

PREFEITURA MUNICIPAL DE VÁRZEA GRANDE

Av. Castelo Branco, Espaço Municipal, 2500 - Centro Sul, Várzea Grande/MT CEP 78125-700 - Fone/Fax: 65 3688 8000

PROJETO:

PROJETO ESTRUTURAL

OBRA:

REFORMA E AMPLIAÇÃO
EMEB ANTONIA FELIPA DE CAMPOS MARTINS

LOCALIZAÇÃO:

RUA SD, S/Nº, QUADRA 100, BR 163
BAIRRO: JARDIM NOVO MUNDO

AUTOR DO PROJETO:

MATHEUS MARCANZONI LEITE
ENGENHEIRO CIVIL CREA-MT 042157

UNIDADE:

METRO

ESCALA:

Indicada

DATA:

SETEMBRO/2021

FOLHA N°

06/
13